



66 Balloo Road, Bangor, Bangor, BT19 7QY  
Sales: 07774594152

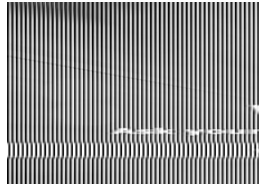
## Vauxhall Mokka 1.7 CDTi SE 5dr | Mar 2014

**\*\*FINANCE AVAILABLE/ FULL S HISTORY/ TOP SPEC SE\*\***

**£5,490**



USED CARS



VectorStock®

VectorStock.com/12699925

**\*\*PLEASE CHECK AVAILABILITY BEFORE TRAVELING\*\***

**FCA REGISTERED DEALER**

**CLICK SEE ALL ADDS TO VIEW ALL OUR STOCK**

**EXCELLENT FINANCE PACKAGES AVAILABLE, SUBJECT TO STATUS!**

**POOR CREDIT APPLICATIONS WELCOME**

**FAST, EASY & FRIENDLY SERVICE**

**CONTACT DIRECTLY FOR PERSONALISED FINANCE QUOTES**

**TRADE INS WELCOME OF LOWER VALUE**

**ALL MAJOR CREDIT & DEBIT CARDS ACCEPTED, CHARGES MAY APPLY**

**BUY WITH CONFIDENCE AT CH CAR SALES! DEALER LEVEL DIAGNOSTICS ON SITE! ALL CARS COME FULLY CHECKED OVER IN OUR WORK SHOP!**

**ALL VEHICLES HPI CLEAR WITH PAGE COMPREHENSIVE PRINT OUT ON REQUEST**

**ALL VEHICLES DVA MILEAGE CHECKED**

**TOP OF THE RANGE SE MODEL**

**2 TONE LEATHER INTERIOR**

**STUNNING EXAMPLE IN WHITE**

**HEATED SEATS**

|                  |                       |
|------------------|-----------------------|
| Miles:           | 75000                 |
| Fuel Type:       | Diesel                |
| Transmission:    | Manual                |
| Colour:          | White                 |
| Engine Size:     | 1686                  |
| CO2 Emission:    | 120                   |
| Tax Band:        | C (£35 p/a)           |
| Body Style:      | Sport utility vehicle |
| Insurance group: | 8E                    |
| Reg:             | SA14VLK               |

### Technical Specs

|                              |                 |
|------------------------------|-----------------|
| DIMENSIONS                   |                 |
| Length:                      | 4278mm          |
| Width:                       | 1777mm          |
| Height:                      | Not Availablemm |
| Seats:                       | 5               |
| Luggage Capacity (Seats Up): | 362L            |
| Gross Weight:                | 1858KG          |
| Max. Loading Weight:         | 468KG           |

|                             |          |
|-----------------------------|----------|
| PERFORMANCE & ECONOMY       |          |
| Fuel Consum. (Urban Cold):  | 52.3MPG  |
| Fuel Consum. (Extra Urban): | 70.6MPG  |
| Fuel Consum. (Combined):    | 62.8MPG  |
| Fuel Tank Capacity:         | 54L      |
| Number Of Gears:            | 6 SPEED  |
| Top Speed:                  | 116MPH   |
| Acceleration 0-100 km/h:    | 10s      |
| Engine Power BHP:           | 128.7BHP |

**HEATED STEERING WHEEL**

**6 SPEED**

**LOW ROAD TAX**

**ONLY GROUP 8 INSURANCE**

**MULTI FUNCTION STEERING WHEEL**

**PRIVACY GLASS**

**IDEAL FAMILY SUV**

**WE LOOK FORWARD TO HEARING FROM YOU!!**

## **Vehicle Features**

3 height adjustable rear headrests, 3 spoke leather steering wheel, 6 speakers, 12V power point front, 60/40 split folding rear seat, 230V rear power outlet, ABS with Brake Assist, Additional storage compartment in boot, Adjustable dashboard illumination, Air recirculation system, Alloy door sill covers, Anti-drill door locks, Anti submarining seats, Ashtray and cigar lighter, Assist grips, Automatic lighting control, Bluetooth system, Body colour electric/heated door mirrors, Body colour electric folding/heated door mirrors, Boot lashing points, Boot open warning light, Centre console with armrest, Centre rear armrest, Chrome door handles, Colour keyed carpet, Combined ipod/USB connection, Cruise control + speed limiter, CSC - Cornering stability control, Cup holders, Daytime running lights, Deadlocks, Delay courtesy light function, Diesel particulate filter, DMB digital radio, Door open warning light, Driver + front passenger lumbar support, Driver/passenger 2 stage auto adaptive airbags, Driver/passenger reading lights, Driver/passenger sunvisors with illuminated vanity mirrors, Driver sunglasses holder, Dual zone climate control, Electric front windows + drivers one touch, Electric rear windows, Electrochrome anti dazzle rear view mirror, Ergonomic sports front seats with extendable seat cushion + electric lumbar adjust, ESC - Electronic Stability Control + traction control, Exterior temperature gauge, Extra tinted glass in rear windows and tailgate, Fingertip controls for audio system, Folding key, Follow me home headlights, Footwell illumination, Front and rear curtain airbags, Front and rear outer seat belt pre-tensioners, Front and rear parking sensors, Front door armrests, Front door storage bins with bottle holder, Front fog lights, Front lateral airbags, Front seat back map pockets, Front side airbags, Fully adjustable front headrests, Heated front seats, Heated rear window with automatic switch off, Heated rear windscreen, Heated steering wheel, Heat reflecting windscreen, Height/reach adjust steering wheel, Height adjustable driver/front passenger seats, Height adjustable front seatbelts, High beam assist, Hill descent control, Illuminated air

conditioned glovebox, Illuminated boot, Immobiliser, Interior courtesy light operated by all doors, ISOFIX on front passenger and rear outer seats, Leather gearknob, Leather upholstery, Lights on warning, Locking wheel bolts, Low fuel level warning light, Luggage compartment carpet, Luggage cover, Multi function trip computer, Oil level gauge, Passenger airbag deactivation system, Pollen filter, Radio frequency remote central locking, Rain sensor windscreen wipers, Rear courtesy lights, Rear door pockets with bottle holders, Rear wiper, Reclining front seats, Remote ultrasonic alarm system, Rev counter, Seat belt force limiter, Seatbelt warning, Service interval indicator, Side protection mouldings, Silver roof rails, Stainless steel exhaust tailpipe, Three 3 point rear seatbelts, Variable power steering