



66 Balloo Road, Bangor, Bangor, BT19 7QY  
Sales: 07774594152

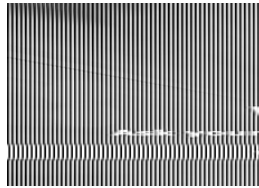
## Nissan Juke 1.5 dCi Acenta Premium 5dr | May 2015

**\*\*FINANCE AVAILABLE/ FULL S HIST/ TOP SPEC\*\***

# £4,690



USED CARS



**\*\*PLEASE CHECK AVAILABILITY BEFORE TRAVELING\*\***  
**FCA REGISTERED DEALER**

**CLICK SEE ALL ADDS TO VIEW ALL OUR STOCK**

**EXCELLENT FINANCE PACKAGES AVAILABLE, SUBJECT TO STATUS!**

**POOR CREDIT APPLICATIONS WELCOME**

**FAST, EASY & FRIENDLY SERVICE**

**CONTACT DIRECTLY FOR PERSONALISED FINANCE QUOTES**

**TRADE INS WELCOME OF LOWER VALUE**

**ALL MAJOR CREDIT & DEBIT CARDS ACCEPTED, CHARGES MAY APPLY**

**BUY WITH CONFIDENCE AT CH CAR SALES! DEALER LEVEL DIAGNOSTICS ON SITE! ALL CARS COME FULLY CHECKED OVER IN OUR WORK SHOP!**

**ALL VEHICLES HPI CLEAR WITH PAGE COMPREHENSIVE PRINT OUT ON REQUEST**

**ALL VEHICLES DVA MILEAGE CHECKED**

**2 KEYS**

**HIGH SPEC ACENTA PREMIUM**

**LOW INSURANCE GROUP**

Miles:	104000
Fuel Type:	Diesel
Transmission:	Manual
Colour:	Silver
Engine Size:	1461
CO2 Emission:	104
Tax Band:	B (£20 p/a)
Body Style:	Sport utility vehicle
Insurance group:	7E
Reg:	VE15UBY

### Technical Specs

#### DIMENSIONS

Length:	4135mm
Width:	1765mm
Height:	1565mm
Seats:	5
Luggage Capacity (Seats Up):	354L
Gross Weight:	1770KG
Max. Loading Weight:	465KG

#### PERFORMANCE & ECONOMY

Fuel Consum. (Urban Cold):	61.4MPG
Fuel Consum. (Extra Urban):	76.4MPG
Fuel Consum. (Combined):	70.6MPG
Fuel Tank Capacity:	46L
Number Of Gears:	6 SPEED
Top Speed:	109MPH
Acceleration 0-100 km/h:	11.2s
Engine Power BHP:	108.6BHP

**LOW ROAD TAX**

**LOW RUNNING COSTS**

**NAVIGATION**

**BLUETOOTH**

**REVERSING CAMERA**

**WE LOOK FORWARD TO HEARING FROM YOU!!**

## **Vehicle Features**

2 speed wipers+variable intermittent wipe, 6 speakers, 12V socket, 17" Sport alloy wheels, 60/40 split folding rear seat, ABS + EBD + EBA, Alarm, Aux input, Bluetooth system, Body colour bumpers, Body colour door handles, Child locks on rear doors, Climate control, Cloth upholstery, Colour rear view camera, Cruise control + speed limiter, DAB Digital radio, Driver and passenger airbags, Driver and passenger side airbags, Electric door mirrors, Electric front/rear windows, Electric speed sensitive power steering, ESP + traction control, Front and rear curtain airbags, Front armrest, Front cupholders x 2, Front door pockets with bottle holders, Front fog lights, Front head restraints, Front seat belt pre-tensioners with load limiters, Gear shift indicator, Glovebox, Height adjustable driver's seat, Height adjustable front seatbelts, Immobiliser, Internal chrome door handles, Isofix child seat preparation, Leather steering wheel and gear knob, LED daytime running lights, Luggage area under floor storage box, Map reading lamp, Nissan connect sat nav system, Passenger airbag deactivate switch, Passenger seat back pocket, Pollen filter, Privacy glass, Rear headrests, Rear tonneau cover integrated into tailgate, Rear wiper, Remote central locking, Service interval indicator, Sports seats, Steering wheel mounted audio controls, Steering wheel rake adjustment, Stereo radio/CD player and MP3 facility, Three 3 point rear seatbelts, Trip computer, Tyre pressure monitoring system, Tyre repair kit, USB port, VDC Dynamic Vehicle Control, Warning triangle and first aid kit