



66 Balloo Road, Bangor, Bangor, BT19 7QY
Sales: 07774594152

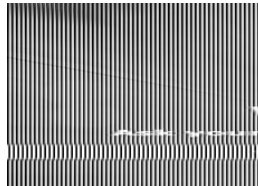
Citroen C4 Picasso 1.6 e-HDi 115 Airdream VTR+ 5dr | Jun 2014

****FINANCE AVAILABLE/ £ 20 ROAD TAX/ HIGH SPEC****

£4,390



USED CARS | NI



****PLEASE CHECK AVAILABILITY BEFORE TRAVELING****
FCA REGISTERED DEALER

CLICK SEE ALL ADDS TO VIEW ALL OUR STOCK

**EXCELLENT FINANCE PACKAGES AVAILABLE, SUBJECT TO
STATUS!**

POOR CREDIT APPLICATIONS WELCOME

FAST, EASY & FRIENDLY SERVICE

**CONTACT DIRECTLY FOR PERSONALISED FINANCE
QUOTES**

TRADE INS WELCOME OF LOWER VALUE

**ALL MAJOR CREDIT & DEBIT CARDS ACCEPTED, CHARGES
MAY APPLY**

**BUY WITH CONFIDENCE AT CH CAR SALES! DEALER LEVEL
DIAGNOSTICS ON SITE! ALL CARS COME FULLY CHECKED
OVER IN OUR WORK SHOP!**

**ALL VEHICLES HPI CLEAR WITH PAGE COMPREHENSIVE
PRINT OUT ON REQUEST**

ALL VEHICLES DVA MILEAGE CHECKED

2 KEYS

RECENT NEW TIMING BELT FITTED

ONLY £20 ROAD TAX

Miles:	98000
Fuel Type:	Diesel
Transmission:	Manual
Colour:	Red
Engine Size:	1560
CO2 Emission:	105
Tax Band:	B (£20 p/a)
Body Style:	MPV
Insurance group:	9E
Reg:	SY14ZPO

Technical Specs

DIMENSIONS	
Length:	4428mm
Width:	1826mm
Height:	1610mm
Seats:	5
Luggage Capacity (Seats Up):	537L
Gross Weight:	1940KG
Max. Loading Weight:	642KG

PERFORMANCE & ECONOMY	
Fuel Consum. (Urban Cold):	62.8MPG
Fuel Consum. (Extra Urban):	74.3MPG
Fuel Consum. (Combined):	70.6MPG
Fuel Tank Capacity:	55L
Number Of Gears:	6 SPEED
Top Speed:	117MPH
Acceleration 0-100 km/h:	11.8s
Engine Power BHP:	112.6BHP

6 SPEED

LOW INSURANCE GROUP

TOUCH SCREEN IN CAR ENTERTAINMENT

IDEAL FAMILY MPV

WE LOOK FORWARD TO HEARING FROM YOU!!

Vehicle Features

'Guide me home' headlamps, 3 point seatbelts on all seats, 6 speakers, 7" touch screen, 12V accessory sockets - front and rear, ABS + EBD + EBA, Adaptive driver and front passenger airbags, Aircraft type trays in front seat backrests, Automatic activation of hazard warning lights, Automatic boot locking, Automatic door locking, Automatic lights and wipers, Bluetooth with USB and AUX input, Body colour bumpers, Body colour door handles, Body colour door mirrors, Child lock indicator, Connecting box, Courtesy light in boot, Cruise control + speed limiter, Cup holders, DAB Digital radio, Double optic headlights, Dual zone automatic air conditioning, Electric folding door mirrors, Electric front/rear windows with one touch/anti pinch, Electric heated door mirrors, Electronic parking brake, ESP, Fold flat passenger seat with storage drawer, Front and rear (row 2) curtain airbags, Front and rear courtesy reading lights, Front armrests, Front fog lights, Front headrests, Front lateral airbags, Front seat back storage pockets, Front seatbelt pretensioners with force limiters, Gear selection indicator, Height/tilt adjustable driver's seat, Hill start assist, Illuminated air conditioned front passenger glovebox, Interior lights activated when doors unlocked, Leather steering wheel with audio controls, LED daytime running lights, Oil level indicator, Ondulice cloth upholstery, Passenger airbag deactivate switch, Rear air vents, Rear headrests, Rear parking sensor, Rear top tether child seat ISOFIX attachment, Rear wiper, Remote central locking + deadlocks, Remote fuel cap release, Service indicator, Split folding rear seats, Super wide panoramic acoustic windscreen, Three foldable/retractable rear head restraints [row 2], Three individual sliding/fold flat rear seats [row 2], Traction control, Transponder immobiliser, Trip computer, Tyre pressure monitor, Under floor storage compartment [row 2], Variable PAS